

Liquid Manufacturing Plant



Sugar Syrup Vessel

Manufacturing Vessel

Storage Vessel

Introduction

The Liquid Manufacturing Plants are ideal tools for the pharmaceutical industry for the production of Oral Liquids. It is specially designed to take care of two critical factors which directly affects the quality of the Liquids.

- Minimum manual handling of Liquid.
- Effective cleanness during manufacturing.

Needless to say, it also provides the benefits of the effective manpower utilization.

"CHITRA" Liquid Manufacturing Plant consist the following equipments and accessories.

Sr. No.	Name of the Equipment
01	Sugar syrup vessel
02	Filters press
03	Manufacturing vessel
04	Transfer pump
05	Storage vessel
06	Transfer pump
07	Piping to connect all above equipments.
08	Working platform.
09	Control panel



Filters press ▶

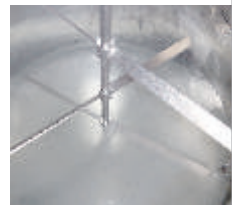
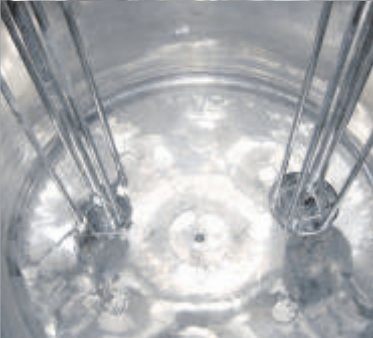




▼ Top Dish Connections



▲ Stirrer & Emulsifier from Top



▲ Mixing Assembly for Storage Vessel

- This system consist of a closed circuit manufacturing facility from feeding of Sugar /Water Phase to loading the Volumetric Liquid Filling Machine.
- The Sugar and Water, are load with vacuum system or by mechanical system or manually.
- The Sugar Syrup Vessel is supplied with high speed stirrer & electrical heating (In small model) / steam heating facility (In bigger size model) .The sugar syrup is prepared at required temperature & are transferred to Manufacturing Vessel by vacuum or by transfer pump.
- The product during emulsion formation is recirculated through In-Line Homoginizer or Liquid Transfer Pump.(Optional Facility)
- The Pump also discharges the product in the Storage Vessel.
- The Storage Vessel is then taken to the filling area (if it is small capacity) and is connected to again Liquid Transfer Pump. Or Storage Vessel remain fixed (In bigger size) & pump transfer the Liquids in the float tank which is connected with filling machine.
- The entire Plant can be operated by centralised operating panel by one operator
- The plant is equipped with an electrical control panel with digital temperature indicators /controllers and digital timers.
- Minimum two batches per shift of the same product can be assured in this plant.
- This plant conforms to CGMP standards (Paint Free Construction).
- Encosed are a few points explaining the system in detail. In case of any queries feel free to contact us.

Liquid Manufacturing Plant

The Salient Features of the Liquid Manufacturing Plant are as follows :

- The Plant is designed to be operated only by one operator and one helper.
- All material transfers are done by vacuum or by transfer pumps.
- All the vessels are CGMP (paint free construction)
- The gaskets used are of silicon (food grade).
- All contact parts are of SS 304 / SS 316 / SS316 - L / as per customers requirements.
- The entry of stirrer & high speed emulsifier are from top or from bottom as per customer requirement or In-line Emulsifier.
- All vessels are suitable for internal pressure of 1 Kg. /Sq. cm. and hence can be sterilized.
- All pipes, pipe fittings and valves are of SS304 / SS316 (as per customer requirement) seamless quality, internally electro polished, with tri-clover ended joints.
- The entire plant is equipped with CIP & SIP connections, so that customer can use these facility, if have CIP & SIP equipment.
- All values of temperature & time of the plant are indicated digitally on the control panel. Ampere indicates on Ampere meters.
- A micro processor based automatic operating plant can be designed as per requirement. (Optional)
- All the inlet & outlet connections are provided with tri clover joints, which are very easy for cleaning & replacement.

